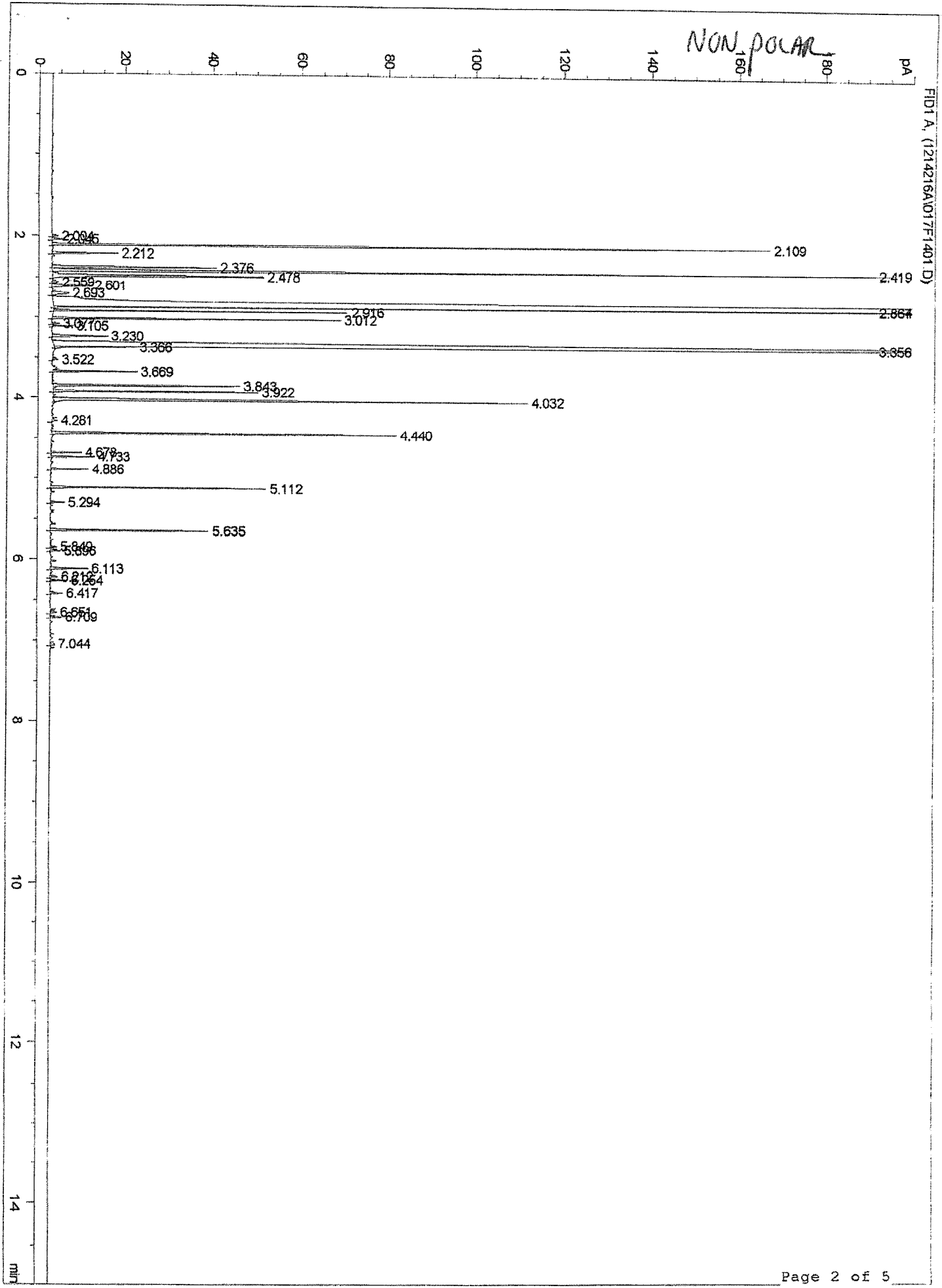


OIL MARJORAM SPANISH PURE C29117

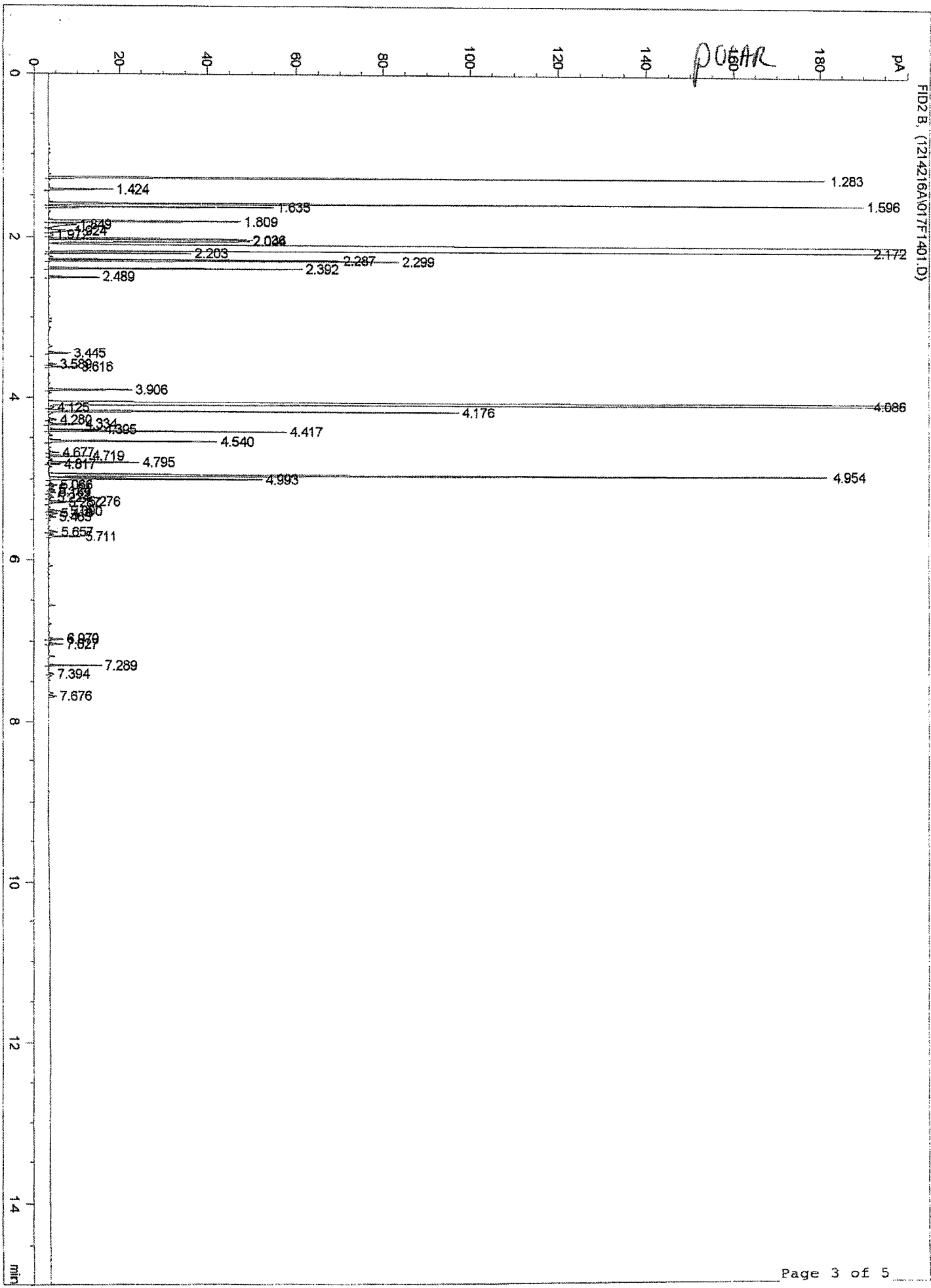
```
=====
Injection Date   : 12/14/2016 5:33:05 PM      Seq. Line :   14
Sample Name      : MARJORAM SPANISH           Location  : Vial 17
                                                Inj       :    1
                                                Inj Volume: 0.1 µl
Sequence File    : C:\HPCHEM\3\SEQUENCE\1214216A.S
Method           : C:\HPCHEM\3\METHODS\METHODS3\CAT18.M
Last changed     : 11/28/2016 4:46:23 PM
FAST GC GENERAL OIL METHOD 0.10 COLUMNS
```

NON POLAR

FID1 A, (1214216A)017F1401.D



POGAR



=====
 Area Percent Report
 =====

Sorted By : Signal
 Multiplier : 1.0000
 Dilution : 1.0000

Signal 1: FID1 A,

Peak #	RetTime [min]	Type	Width [min]	Area [pA*s]	Height [pA]	Area %
1	2.004	PV	0.0106	1.04239	1.55870	0.02846
2	2.045	VP	0.0113	1.98139	2.69729	0.05410
3	2.109	BP	0.0109	114.17922	164.33559	3.11759
4	2.212	BP	0.0108	10.73146	15.55346	0.29302
5	2.376	BV	0.0145	34.13585	38.00803	0.93206
6	2.419	VB	0.0118	145.67966	193.15016	3.97769
7	2.478	BB	0.0131	40.93538	48.45970	1.11771
8	2.559	PV	0.0143	1.58743	1.60459	0.04334
9	2.601	VP	0.0168	9.71655	9.21870	0.26530
10	2.693	PP	0.0229	6.76058	4.01134	0.18459
11	2.864	VV	0.0271	1965.61450	879.10327	53.66979
12	2.867	VB	5.28e-3	281.00122	887.08862	7.67255
13	2.916	BB	8.23e-3	35.98990	67.40797	0.98268
14	3.012	BB	8.80e-3	37.11142	66.08085	1.01330
15	3.077	BB	9.29e-3	1.09108	1.80702	0.02979
16	3.105	BB	8.91e-3	2.81970	4.94138	0.07699
17	3.230	BB	0.0113	10.19031	13.08153	0.27824
18	3.356	PV	0.0237	614.02771	315.59683	16.76562
19	3.366	VB	6.28e-3	8.27251	19.19931	0.22588
20	3.522	VB	0.0116	1.03112	1.43412	0.02815
21	3.669	VB	9.41e-3	11.76082	19.84562	0.32112
22	3.843	BB	0.0121	37.10685	42.84346	1.01318
23	3.922	PP	9.93e-3	30.94565	47.00247	0.84495
24	4.032	BB	0.0145	109.38689	108.57148	2.98674
25	4.281	BP	0.0183	1.60890	1.31245	0.04393
26	4.440	BB	0.0112	55.46777	78.75927	1.51451
27	4.678	BP	9.24e-3	4.12785	7.14759	0.11271
28	4.733	PB	9.08e-3	5.88926	10.06042	0.16080
29	4.886	BP	9.23e-3	5.12617	8.88105	0.13997
30	5.112	BP	9.96e-3	31.53075	49.32621	0.86093
31	5.294	BB	9.37e-3	1.96399	3.33663	0.05363
32	5.635	BP	9.84e-3	23.00070	36.57338	0.62802
33	5.849	BP	9.87e-3	1.00052	1.53106	0.02732
34	5.896	VB	0.0103	1.62430	2.42286	0.04435
35	6.113	BP	0.0114	6.71370	8.84487	0.18331
36	6.212	PP	9.30e-3	1.07611	1.78018	0.02938
37	6.254	BP	9.66e-3	2.49535	4.06337	0.06813
38	6.417	PB	0.0120	2.53683	2.96362	0.06927
39	6.651	BB	0.0125	1.38164	1.57779	0.03772
40	6.709	BB	0.0108	1.98546	2.79412	0.05421
41	7.044	PV	0.0211	1.79362	1.15861	0.04897

>61.3y23y

Totals : 3662.42246 3175.13501

Results obtained with enhanced integrator!

Signal 2: FID2 B,

Peak #	RetTime [min]	Type	Width [min]	Area [pA*s]	Height [pA]	Area %
1	1.283	BB	0.0109	120.27956	178.39780	3.08892
2	1.424	PB	0.0114	10.89439	15.14393	0.27978
3	1.596	PV	0.0131	150.22366	186.82980	3.85793
4	1.635	VB	0.0112	36.29398	51.57967	0.93207
5	1.809	PP	0.0152	40.68948	44.21777	1.04496
6	1.849	VB	0.0213	8.81907	6.52964	0.22648
7	1.924	BP	0.0226	7.23867	5.33629	0.18590
8	1.972	VB	0.0179	1.29867	1.09045	0.03335
9	2.036	BV	0.0178	61.40074	46.11290	1.57685
10	2.044	VB	0.0200	58.36781	46.12857	1.49896
11	2.172	BV	0.0306	2209.14111	869.84979	56.73342
12	2.203	VP	6.92e-3	14.62743	32.99145	0.37565
13	2.287	BV	9.36e-3	40.63262	66.63089	1.04349
14	2.299	VB	7.35e-3	38.47323	80.19785	0.98804
15	2.392	BP	8.17e-3	30.76629	58.16285	0.79012
16	2.489	BB	7.97e-3	6.08294	11.87927	0.15622
17	3.445	BB	9.18e-3	3.01691	5.08008	0.07748
18	3.589	BV	9.17e-3	1.12165	1.89137	0.02881
19	3.616	VB	9.40e-3	4.04435	6.83612	0.10386
20	3.906	BB	0.0105	12.98665	19.58218	0.33351
21	4.086	BV	0.0177	665.08295	477.89685	17.08014
22	4.125	VP	0.0148	1.33667	1.24401	0.03433
23	4.176	VV	9.50e-3	58.46428	94.06115	1.50143
24	4.280	BB	9.31e-3	1.02987	1.76332	0.02645
25	4.334	PB	8.66e-3	4.30657	7.83970	0.11060
26	4.395	BV	8.17e-3	6.54237	12.36861	0.16802
27	4.417	VB	9.71e-3	33.68669	54.53067	0.86512
28	4.540	BB	0.0103	26.85813	38.93660	0.68975
29	4.677	VB	9.63e-3	1.41532	2.31661	0.03635
30	4.719	PB	9.21e-3	5.54781	9.29990	0.14247
31	4.795	VV	9.21e-3	12.61825	21.14411	0.32405
32	4.817	VV	9.81e-3	1.74407	2.78255	0.04479
33	4.954	BV	0.0116	146.78516	178.84680	3.76962
34	4.993	VB	0.0109	34.10363	48.69569	0.87582
35	5.066	BV	8.56e-3	1.02943	1.90405	0.02644
36	5.124	BV	0.0142	1.23701	1.41995	0.03177
37	5.159	VV	0.0143	1.64347	1.58580	0.04221
38	5.224	VV	0.0131	1.13442	1.25262	0.02913
39	5.276	VV	9.56e-3	5.32625	8.50296	0.13678
40	5.287	VP	9.01e-3	2.38033	3.82251	0.06113
41	5.390	VP	9.26e-3	2.55274	4.24761	0.06556
42	5.418	VB	0.0139	1.97412	2.02560	0.05070
43	5.465	PP	9.86e-3	1.02158	1.56649	0.02624
44	5.657	VB	9.41e-3	1.35691	2.20976	0.03485
45	5.711	VB	9.95e-3	5.00391	7.83615	0.12851
46	6.970	BV	9.43e-3	2.05051	3.45086	0.05266
47	7.027	BB	9.45e-3	2.04195	3.30750	0.05244
48	7.289	BB	8.86e-3	7.04016	12.42382	0.18080
49	7.394	PV	0.0134	1.03992	1.26061	0.02671
50	7.676	PV	9.61e-3	1.14364	1.81239	0.02937

Totals : 3893.89734 2744.82394

Results obtained with enhanced integrator!

*** End of Report ***